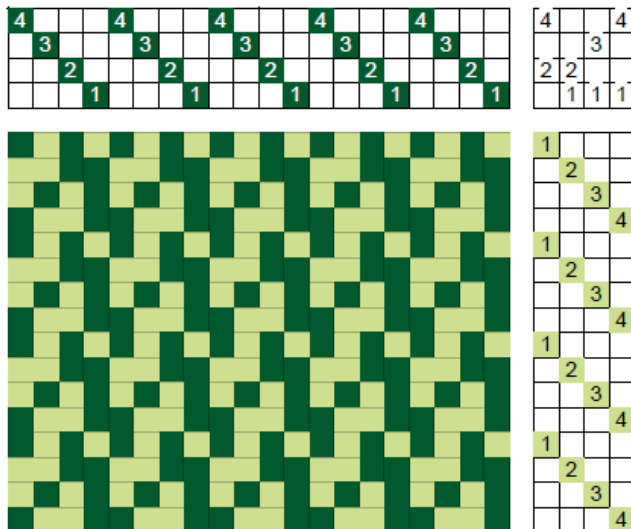


Pebble Weave

The Pebble Weave (in contrast to the [Pebble Twill](#)), is a broken twill with a straight draw



threading, as shown in the drawdown on the left. The treadling is from the book *A Handweaver's Pattern Book* by Marguerite P. Davison. She also lists another treadling, which is similar to [Crepe Weave](#).

In the fabric below, the square surrounds a single repeat of the threading and treadling, since the seemingly randomness of the structure

makes it difficult to detect it in the fabric.

The “weave” portion of the name is confusing, since “weave” generally refers to a group of structures, for example, doubleweave. However, there are other examples of this use. In this case, perhaps the “weave” in the name is to distinguish it from the pebble twill, since both are twills.

The name “pebble” may have come from the appearance of the structure, the single warp dots surrounded by weft, more visible in the drawdown than in the fabric.

